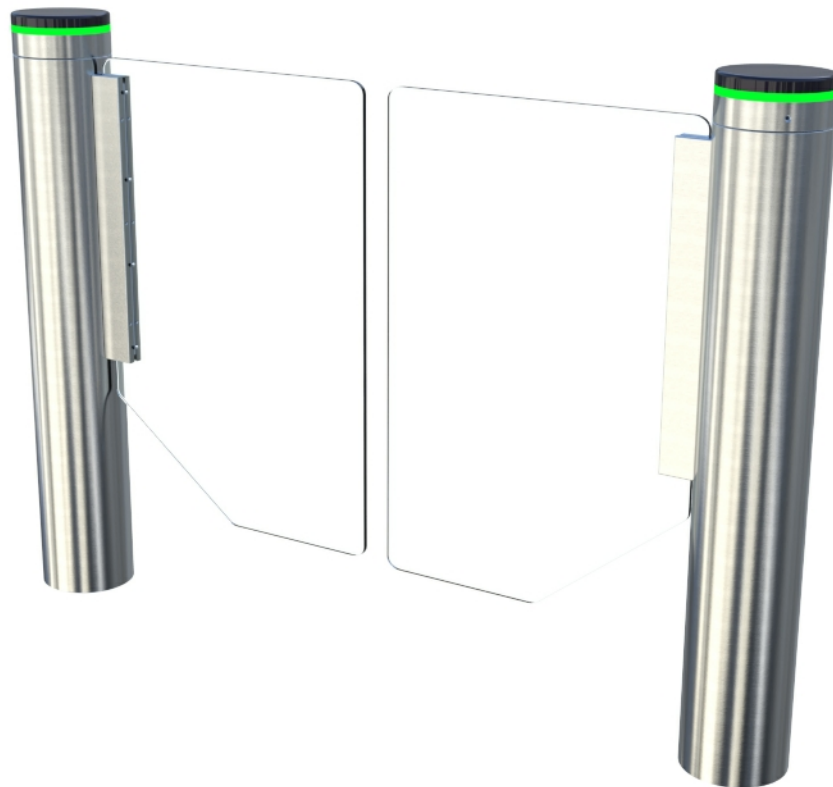




PEDESTRIAN ENTRANCE CONTROL

SG100 Swing Gate



“Evolving the way you manage your pedestrian access.”

SG100 SWING GATE

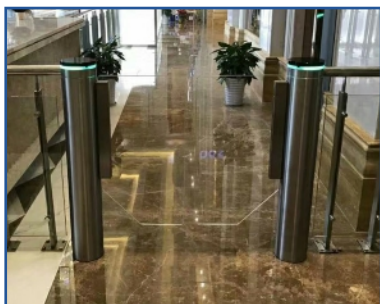
The SG100 swing gate complements our range of tripod turnstiles, retractable speed and flap gates.

Providing large walkways to meet the needs of fire regulations, requirements for people with reduced mobility and large bulky items

SECURITY

When installed in conjunction with any access control system swing gates provide a low level of entrance security.

- Optional photocells allows the gate to close after a passage, reducing security breaches such as tailgating and collusion;
- Low gap under optically only 250 mm;
- Various obstacle highs up to 1500 mm;
- Standard obstacle material is plexiglass to resist attacks with hammers;
- Toughened glass option come with a laminated film.
- Electromechanical locking to withstand forced entry attempts.



SAFETY

- Optional photocell for user over 1mt provides protection during the opening and closing cycle;
- Impact safety in the opening and closing cycle of the obstacle;
- In the event of a power loss, the obstacles can be manual push in any direction;
- Fire alarm input enables immediate opening of the gate.

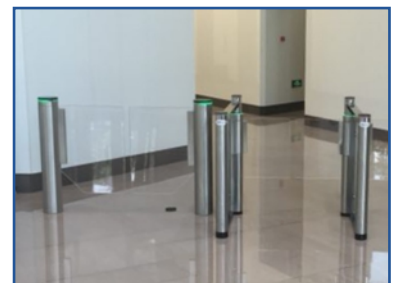


THROUGHPUT

- 10~20 people per/min. Depending on access control;

RELIABILITY

- MCBF of 5 million cycles;
- Extended manufactures parts warranty for low cost of ownership;



CONNECTIVITY

- TCP/IP communication;
- Reception touch screen controller;
- Reception push button controllers.

FEATURES AND OPTIONS

FEATURES

The gate can be set to operate in a 9 different operating modes, any combination of, Controller, free are barred for each direction of travel.

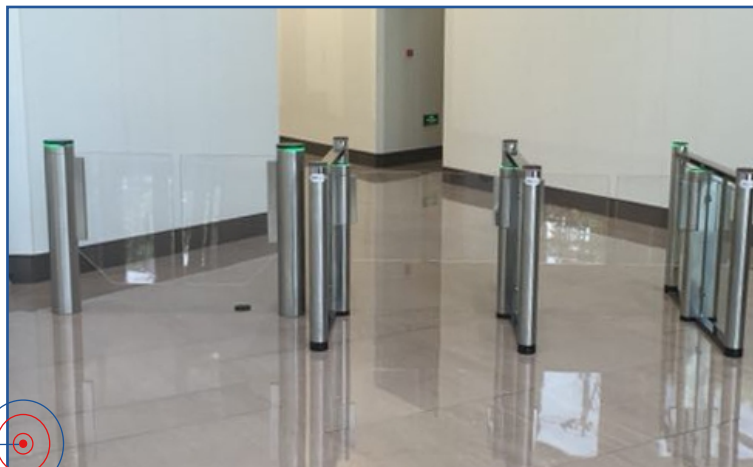
There is a so called "Stacking function" which can be set to remember 1 to 99 open commands.

As standard the SG100 is supplied with:-

- Obstacle, W850 x H900mm 12mm thick plexiglass;
- Brushed 304 stainless steel cabinet, D168 x H1050 mm;
- Status indicator.

STATUS LED's

Status LED's indicate to the user whether the gate is in use or not.



OPTIONS

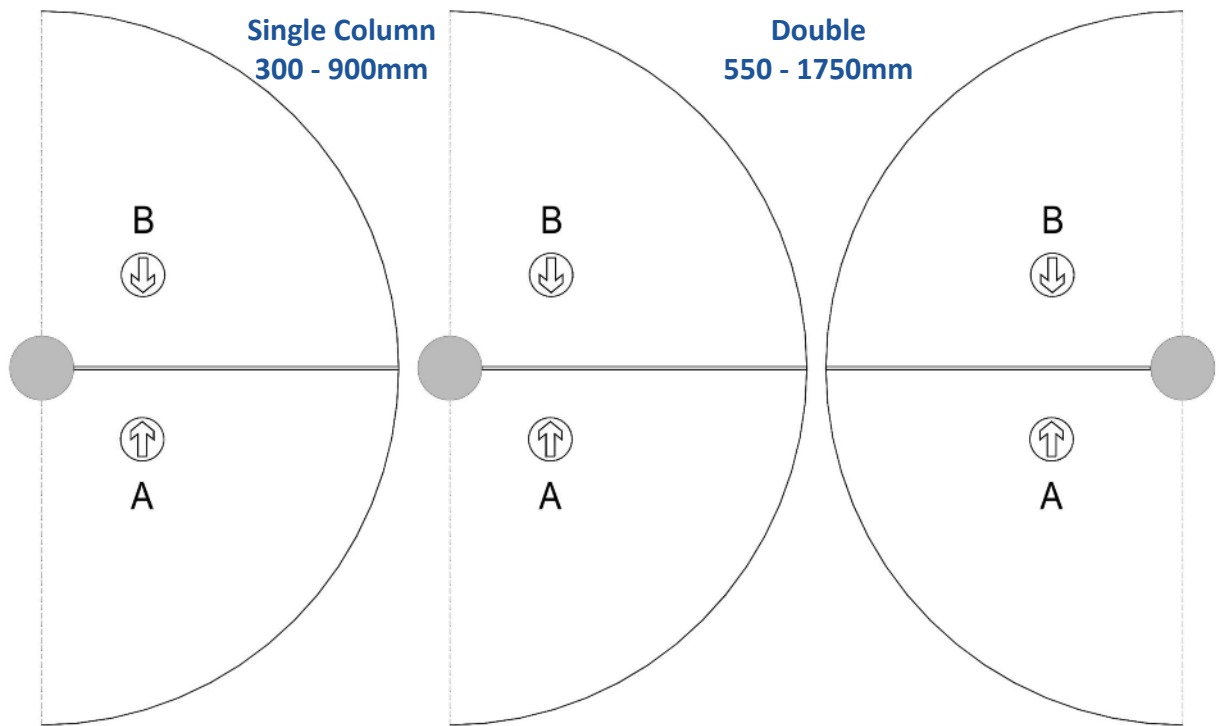
- Various obstacle heights and widths.
- Obstacle made from 10mm thick toughened glass with a laminated film;
- Photocells for increased safety and security;
- Free standing surface plinth to reduce civil's and speed installation;



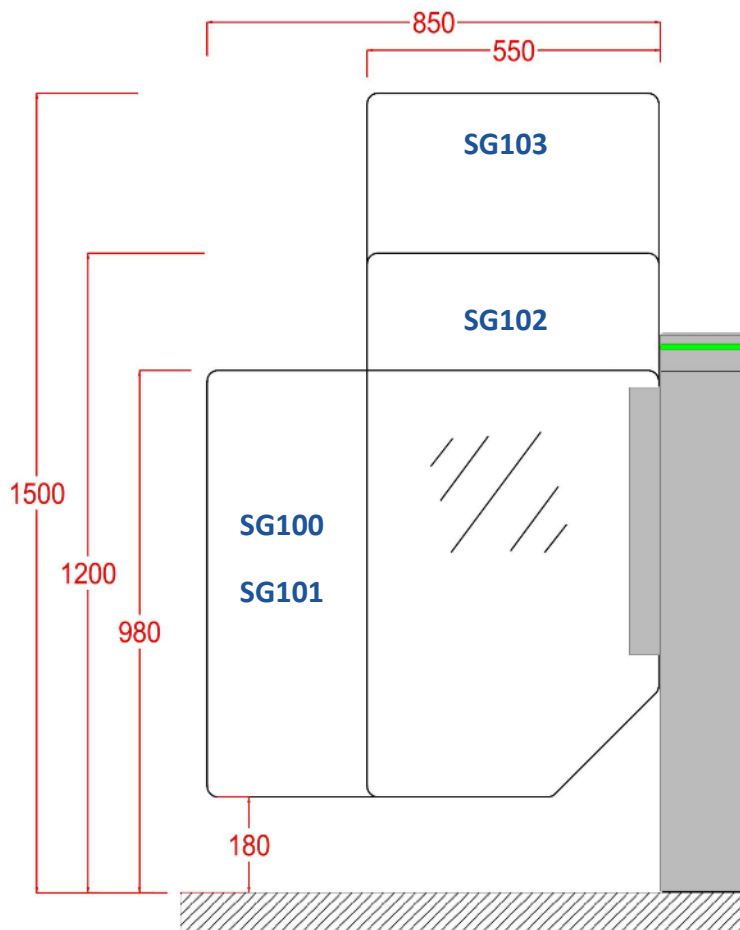
- Photocells for increased safety and security;
- LED lighting of obstacle;
- Drilling templates for a speedy and more accurate installation;
- Output relays for passage complete signals, alarm outs to trigger ACU and CCTV;
- Reception touch screen console;
- Reception engraved push button console.



WALKWAY WIDTHS



OBSTACLE HEIGHTS and WIDTHS



TECHNICAL CHARACTERISTICS

Models	SG100, SG101, SG102, SG103.
Environment	Internal use only.
Column Size	Dia 168 x H1050mm.
Electrical supply	Single phase 110-220 Vac (+/-10%), 180W 50/60 Hz + Ground.
Power consumption	Standby: 5W. Cycle: 35W. Peak: 40W.
Motor and Gearbox	1 No. 24Vdc motor with planetary gearbox's.
Min opening or closing times	0.8 to 1.2s (Depending on the obstacle width).
Ambient operating Temperature	0°C +60°C.
Ambient relative humidity in operation	5%-95%, no condensation.
MCBF	5 Million cycles between failures, with recommended maintenance.
Sound level	55 dB from 1m away.
Weight	62 kg.
Conforms to European standards	

WARRANTY

Standard warranty period 12 months, manufactures 24 to 48 months extended parts warranty available at time of purchase, subject to :-

- Our general terms & conditions of sale and preventive maintenance programs.
- See warranty details in our Terms & Conditions of sale.
- Maintenance operations are detailed in the technical manuals.

SAFETY IN USE

- For safety reasons, children (a user smaller than 0.9m tall) must be supervised by an adult at all times when in the vicinity of and during passage through the gate(s).
- A child **MUST** precede the accompanying adult when lane passage is required.
- If regular use by children is anticipated, the manufacturer recommends that all options and parameters are set to the optimum level of protection.

WORK BY OTHERS

- Bolting the gate to the floor.
- Electrical supply.
- Cabling between gates in the same group.
- Cabling to any external peripherals.
- Integration of any accessories.

HOW TO CONTACT US



North Branch

BFT Automation UK Ltd.

Units C2-C3,
The Embankment Business Park.
Vale Road, Heaton Mersey,
Stockport.
SK4 3GL

Telephone:

01614 560 456

Web:

www.bftautomationuk.com



South Branch

BFT Automation (South) Ltd.

Enterprise House,
Murdock Road,
Dorcan,
Swindon.
SN3 5HY

Telephone:

01488 674 750

Web:

www.bftautomationuk.com



Ireland Branch

BFT Automation Ltd.

Unit D3, City Link Business Park.
Old Ness Road,
Dublin 12.

Telephone:

+353 1 456 4711

Web:

www.bftautomationuk.com



ITAB Shop Products UK Ltd

CMB House, Sherbourne Drive,
Tilbrook,
Milton Keynes.
MK7 8BA

Telephone:

07773 790 238

Web:

www.itab.com