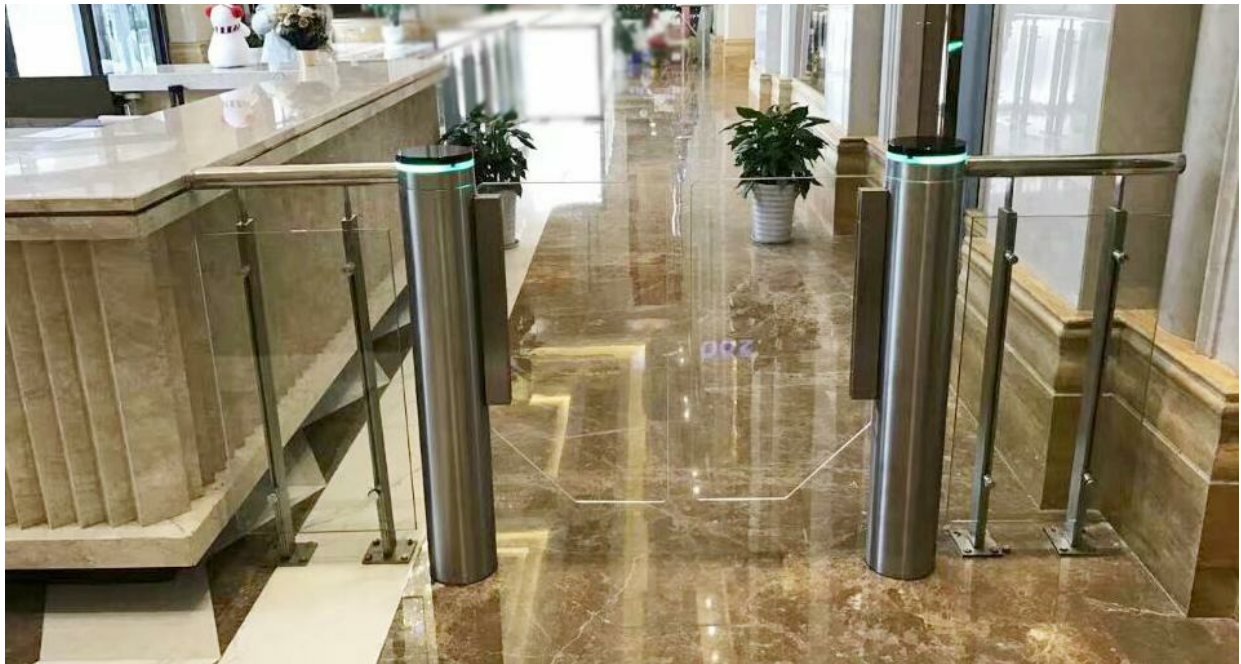


SG100 swing Gate



Technical parameter:

The SG100 swing gate complements our entrance gates and turnstile, offering large walkways to meet fire regulations, the requirements for people with reduced mobility and large bulky items.

The SG100 can be used alone or as a master/slave system and in conjunction with our PG, RT or TT pedestrian entrance control products.







Basic information

- Model SG100, 101, 102 and 103.
- Column Size $\Phi 168 \times h1050$ (mm).
- Box Material 1.5mm ASI304
- Obstacle Material: 10mm Plexiglass or 8m toughened glass.
- Place of use: Indoor.
- Pass width: Standard 600mm/900mm

Scope of application

width



$\cong 600$ mm	 
$\cong 900$ mm	 
	With warning - optional sensors.
	With caution- optional sensors.

Electrical and environmental

- Voltage: 100 to 240 Vac .
- Frequency:
- Working voltage: DC24V.
- Current: static 300mA; dynamic 3A (maximum operating current).
- Operating temperature: -20 to 60 degrees C (-4 to 140 degrees F).
- Storage temperature: -40 to 60 degrees C (40 to 140 degrees F).
- Relative humidity: 5% to 95% under non coagulation.

Customisable options

- Material: Optional ASI316 or other.
- Appearance: spray colour or electroplate (user provide swatches).
- Surface: wiredrawing / polish / sand blasting (standard for wiredrawing)
- Obstacle: Custom made toughened glass / round hole / other widths/high

Specification

- Optional 2 sensors for auto-close after passage detection;
- Convenient and easy to use, such as carrying items, such as parcels, baggage, etc;
- Access mode: Single or bi-directional.
- Running speed: 0.8s-1.2s, can be set by user).
- Operating mode: normally open or normally closed;
- Control mode: 9 operating modes, controlled, free, barred.
- LED: Status indication / direction indication;
- Safety function: low impact force, optional sensors provide safety in the opening and closing cycles;
- Standard interface :- volt free contacts;
- Reception desk consoles;
- Stacking function: Can remember 1 to 99 continuous open commands;
- TD controller with user-friendly interface for user debugging and gate set up;

Mechanism performance

- Positioning: encoder.
- Power failure: manually push.
- Power drive: DC brush-less servo motor.
- Door opening: 90 degrees to the middle
- Movement angle: about 180 degrees;
- Single door size; 300~600mm (customisable)
- Equipment noise: 52db; switch gate 60db
- Throughput: normally closed mode is greater than 25 persons per minute;
- MCBF: 1,000,000 continuous duty cycle.

Standard product size:

